


Advanced Public Information Search

LA County Library | Pro Bono Week

lacountylibrary.org / [@lacountylibrary](https://twitter.com/lacountylibrary)





Want to look up an old friend or research an organization before a job interview? Learn about OSINT (Open Source Intelligence), how it's being utilized, and popular resources from LA County Library and beyond.

What is OSINT?

- Open Source Intelligence
 - Intelligence that is “produced from publicly available information that is collected, exploited, and disseminated in a timely manner to an appropriate audience for the purpose of addressing a specific intelligence requirement”¹
 - Data collected could be about a person, place, object, organization
- The internet has greatly increased both the quantity and ease-of-access to OSINT sources



How is OSINT utilized?

- Investigation
 - Intelligence agencies (CIA, NSA, FBI) use OSINT in conjunction with other intelligence to investigate crime, compile info on threats
- Security
 - Consultants doing penetration testing, white-hat hackers
- Crime
 - Hacking, identity theft, fraud



Types of OSINT

- The Internet
 - Social networking sites (LinkedIn, Facebook, Youtube, TikTok, Instagram, etc)
 - Search engines, databases, blogs, forums
 - Dark web
- Publications
 - Newspapers/magazines, newsletters, company data
- Media
 - Television, radio, podcasts



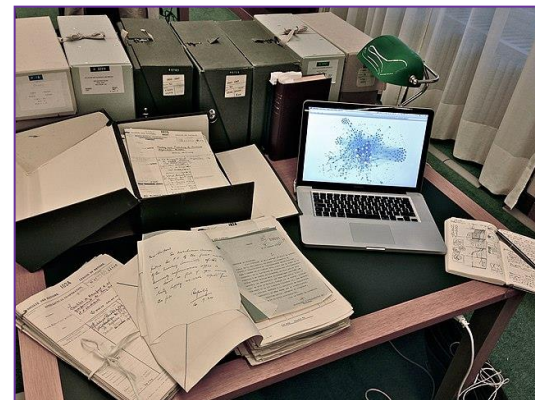


Information can be considered Open Source if it is:

- Published/broadcast for a public audience
 - Ex: news media content
- Available to the public by request
 - Ex: census data
- Available to the public by subscription or purchase
 - Ex: industry journals
- Can be seen or heard by a casual observer
- Made available at places/events open to the public

Pros/Cons of OSINT

- Pros
 - Accessibility – limited to no barriers of accessibility
 - Legality – gathering intel less likely to be illegal
 - Cost effective– most information is freely available
- Cons
 - Verifying information is legitimate
 - Sheer amount of available information



OSINT Resources @ LA County Library

- Business Insights: Essentials
 - Company profiles, histories, detailed information (Financials, SWOT, news, etc)
- Data Axle Reference Solutions
 - US Business – detailed business information
 - US Residential – conduct market research or locate friends & relatives
- <https://lacountylibrary.org/business/>



General OSINT Resources

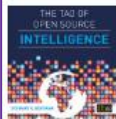
- Google Dorks
 - Google tools which can be used for advanced info search on webpages
 - Various uses include:
 - Searching for specific text/characters/filetypes on webpages.
 - Viewing cached versions of webpages.
- Github
 - Diverse array of OSINT resources
 - Search engine lists.
 - Tools to research IP, usernames, people, companies, etc.



Library Resources

- Catalog – eBooks & more!
- Online Learning
 - LinkedIn Learning
 - Gale Courses
- Programming

<https://lacountylibrary.org/learn/>



The Tao of Open Source Intelligence

by Stewart Bertram

Format:  eAudiobook

Electronic Format: HOOPLA AUDIO BOOK

Excerpt: The Tao of Open Source Intelligence Stewart Bertram

Available: Unlimited



Open Source Intelligence Methods and Tools

by Nihad A. Hassan

Format:  eBook

Electronic Format: HOOPLA E BOOK







Excerpt: Open Source Intelligence Methods and Tools Nihad Hassan

Available: Unlimited

Library Resources

- Catalog – eBooks & more!
- Online Learning
 - LinkedIn Learning
 - Gale Courses
- Programming

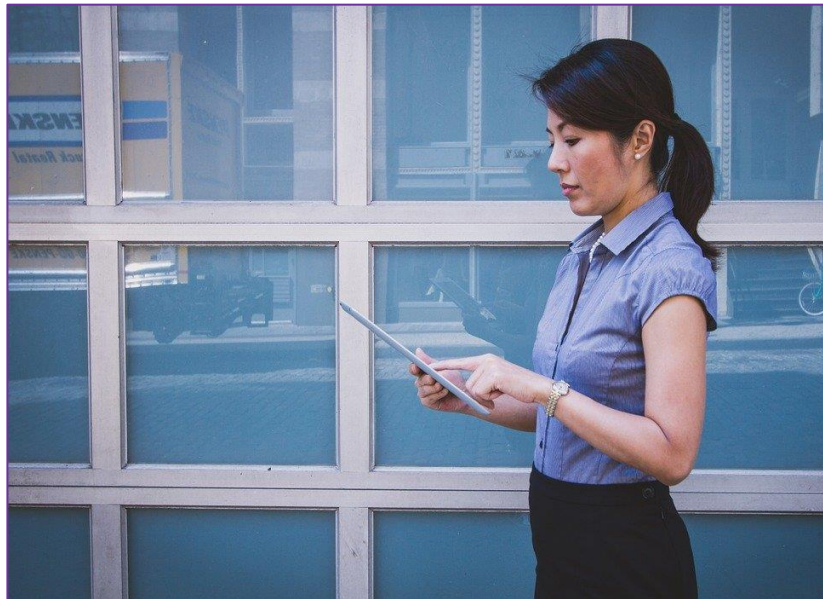
<https://lacountylibrary.org/learn/>

	<p>COURSE</p> <p>OSINT Essential Training</p> <p> LinkedIn · By: Mike Wylie · Mar 2021</p>
	<p>VIDEO</p> <p>OSINT tools</p> <p> LinkedIn Learning · May 2016 · From the course: Ethical Hacking: Footprinting and Reconna</p> <p>8,736 learners</p>
	<p>VIDEO</p> <p>Open-source research tools</p> <p> LinkedIn · 1 month ago · From the course: CompTIA PenTest+ (PT0-002) Cert Prep: 5 ...</p>

Reference Services

- Need information? Speak to a librarian!
 - Phone (M-F, 9am-6pm)
 - Text (M-F, 12-6pm)
 - Email
 - Instant Librarian (M-F, 12-6pm)

lacountylibrary.org/contactus/





Recap

We learned:

- What is OSINT?
- How is OSINT utilized? And by whom?
- Types and sources of OSINT.
- OSINT resources from LA County Library and beyond.



Q&A

